

E-TEC NX



**7 YEAR
WARRANTY**

KEY FEATURES:

- + Stainless steel heat exchanger with a single pass coil moulded in thermoplastic to make the boiler lighter
- + Delta T variable speed operation pump
- + Adjustable heating flow temperature to allow increased efficiency
- + Customisable range output
- + Combined expansion relief with condensate drain
- + Weather compensation compatible
- + Open Therm and Alpha BUS control compatible
- + Removable push fit flue connection
- + Zinc plated expansion vessel to prevent corrosion

BOILER SPECIFICATIONS

| Model | Part number | DHW output (kW) | CH output (kW) | Flow rate @ 35°C rise l/min | Boiler dimensions H x W x D (mm) | Lift weight (kg) | Standard warranty | Modulation range | Max. horizontal flue length (m) | Max. vertical flue length (m) |
|-------------|-------------|-----------------|----------------|-----------------------------|----------------------------------|------------------|-------------------|------------------|---------------------------------|-------------------------------|
| E-Tec 28 NX | 3.033112 | 28.0 | 26.1 | 12.1 | 712 x 440 x 255 | 31.2 | 7yr | 1:6 | 12 | 14 |
| E-Tec 33 NX | 3.033113 | 32.0 | 30.4 | 14.1 | 712 x 440 x 255 | 33.4 | 7yr | 1:6 | 12 | 14 |

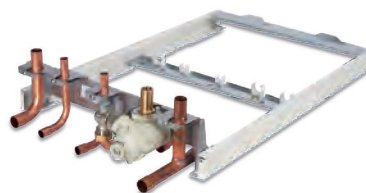
LPG models available

ACCESSORIES

| 500mm EasyFlue | 1000mm EasyFlue | Vertical flue | PMK (black) | Weather comp. | Trace heating kit | Alpha Touch | Climatic RF | Climatic hard-wired | Digital EasyStat |
|----------------|-----------------|---------------|-------------|---------------|-------------------|-------------|-------------|---------------------|------------------|
| 3.031805 | 3.031806 | 3.031812 | 6.2001300 | 3.022383 | 6.5500050 | 7.2000130 | 3.022143 | 3.022144 | 7.2000050 |



ACCESSORIES



PremierPack Pro
Part Number: 3.028421
BS7593: 2019 compliant

**+2 YEAR
WARRANTY**



Cyclone Filter
Part Number: 3.034133
BS7593: 2019 compliant

**+1 YEAR
WARRANTY**



Protection Pack
Part Number: 6.5500055
BS7593: 2019 compliant

**+1 YEAR
WARRANTY**



Condensate Pump
Part Number: 3.026374