

# EVOKE NX



**7 YEAR  
WARRANTY**

## KEY FEATURES:

- + Stainless steel heat exchanger with a single pass coil moulded in thermoplastic to make the boiler lighter
- + Delta T variable speed operation pump
- + Adjustable heating flow temperature to allow increased efficiency
- + Customisable range output
- + Combined expansion relief with condensate drain
- + Weather compensation compatible
- + Open Therm and Alpha BUS control compatible
- + Removable push fit flue connection
- + Zinc plated expansion vessel to prevent corrosion

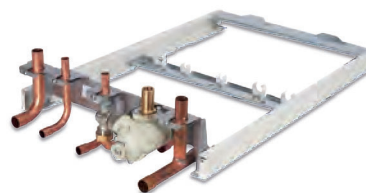
## BOILER SPECIFICATIONS

Model	Part number	DHW output (kW)	CH output (kW)	Flow rate @ 35°C rise l/min	Boiler dimensions H x W x D (mm)	Lift weight (kg)	Standard warranty	Modulation range	Max. horizontal flue length (m)	Max. vertical flue length (m)
Evoke 28 NX	3.033114	28.0	26.1	12.1	712 x 440 x 255	31.2	7yr	1:6	12	14
Evoke 33 NX	3.033115	32.0	30.4	14.1	712 x 440 x 255	33.4	7yr	1:6	12	14

LPG models available

## ACCESSORIES

750mm Cut down flue	500mm EasyFlue	1000mm EasyFlue	Vertical flue	PMK (black)	Weather comp.	Alpha Touch	Climatic RF	Climatic hard-wired	Digital EasyStat
3.031813	3.031805	3.031806	3.031812	6.2001300	3.022383	7.2000130	3.022143	3.022144	7.2000050



**PremierPack Pro**  
Part Number: 3.028421  
BS7593:2019 compliant

**+2 YEAR  
WARRANTY**



**Cyclone Filter**  
Part Number: 3.034133  
BS7593:2019 compliant

**+1 YEAR  
WARRANTY**



**Protection Pack**  
Part Number: 6.5500055  
BS7593: 2019 compliant

**+1 YEAR  
WARRANTY**



**Condensate Pump**  
Part Number: 3.026374